

P-019R1



Police Modifier Bulletin

SVE BULLETIN

SPECIAL VEHICLE ENGINEERING – BODY BUILDERS ADVISORY SERVICE

E-Mail via website: www.fleet.ford.com/truckbbas (click "Contact Us")

Toll-free: (877) 840-4338

Date: 9 July, 2014

REVISION	UPDATE	REVISION DATE
P-019R1	<ul style="list-style-type: none">Revised to suggest VDRAIN Ultra ilo VDRAIN Original part	9 July, 2014

2013MY and later Police Interceptor – Melting Snow or Water on Vinyl Flooring

Models Affected

2013MY and later Police Interceptor Sedan and Utility

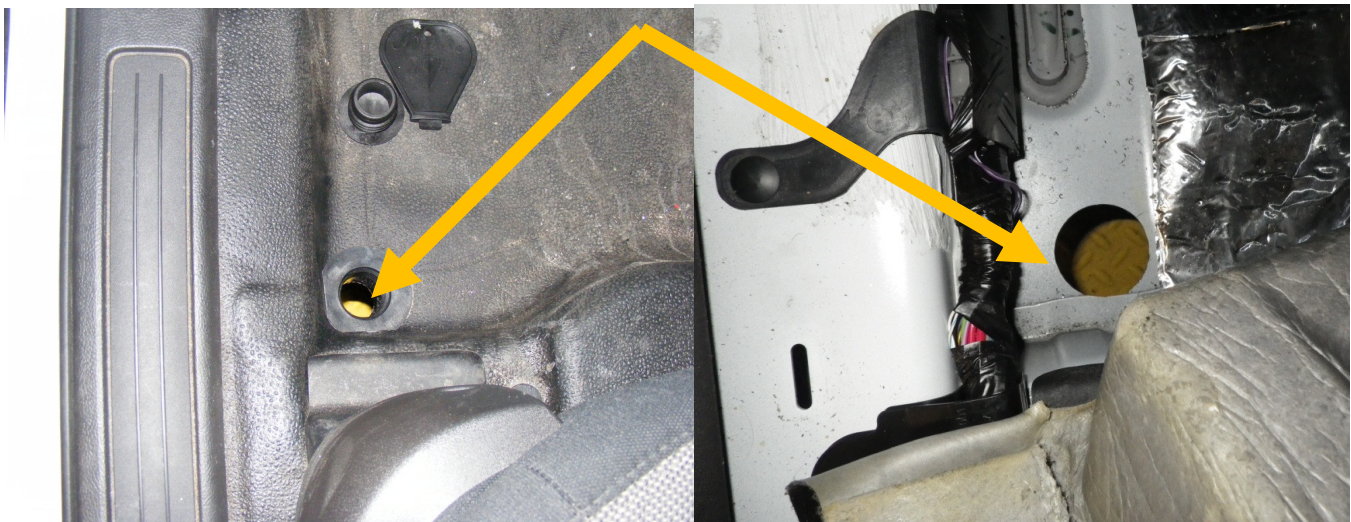
Purpose

Revise Bulletin P-019 to update with VDRAIN Ultra, ilo VDRAIN Original part, that will provide additional length to improve ease of installation. Length can be adjusted at time of installation to best fit the application.

In the northern United States and Canada, some agencies have experienced excessive water on the flooring caused by snow melting off of officer's boots. Besides the annoyance of water on the floor, it can also get on the driver's pant legs and can slosh around and get under the vinyl flooring.

Footwells

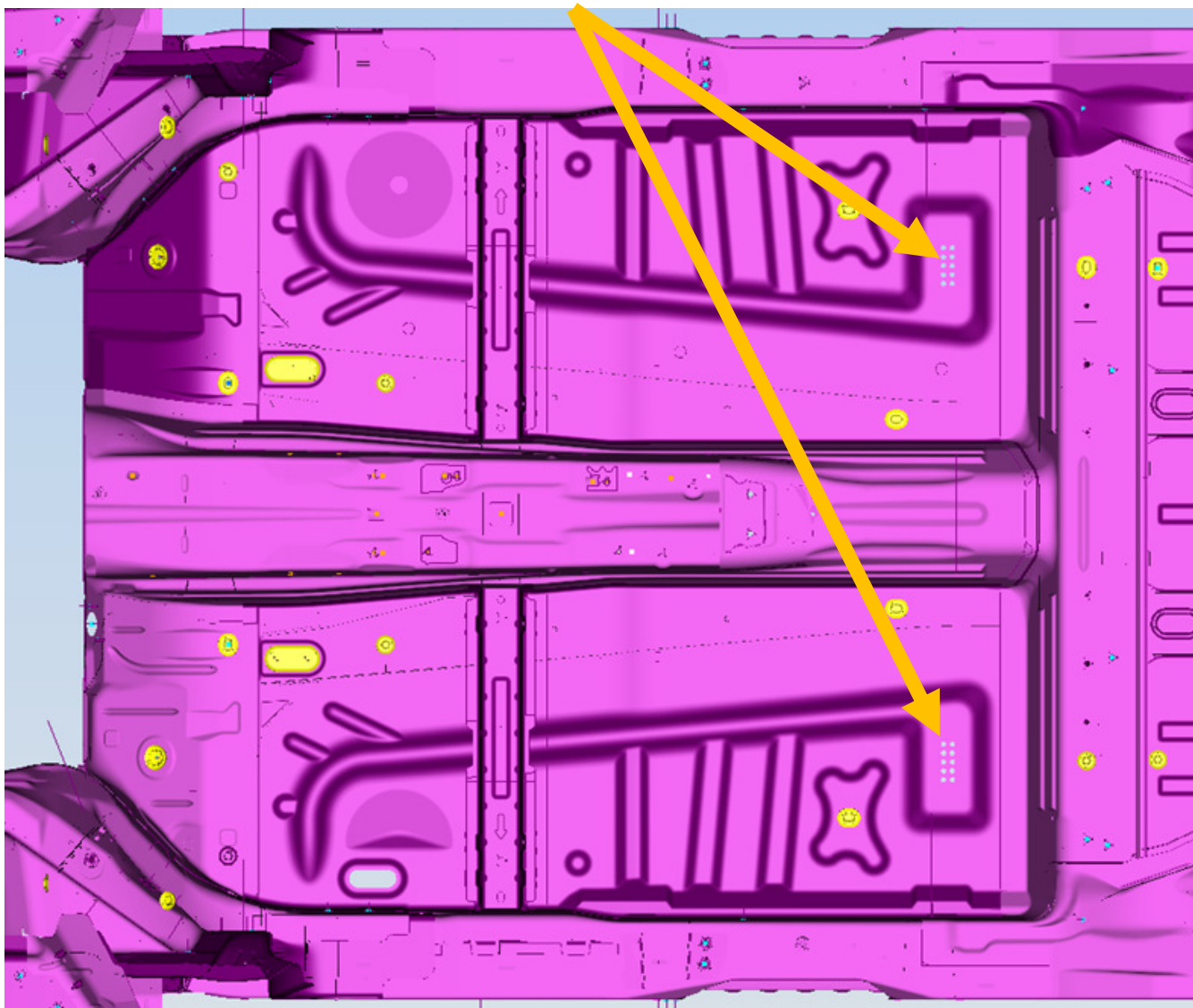
The VDRAIN Ultra device allows water to be quickly drained from the floor. This component is available at the manufacturer's website: <http://www.vdrain.com/>. Below is an example of the device located in the driver's footwell area, installed per the drain manufacturer's procedure.



The drain can be installed in other locations to aid in water evacuation and vehicle cleaning.

Body Drain

In addition to the VRAIN, also include this modification to the vehicle to reduce the amount of water trapped between the vinyl flooring and the body floorpan. Lift the rear vinyl flooring up from the floorpan and locate the e-coat drain holes under the rear passenger footwells. Using an awl or phillips screwdriver puncture down through two of the holes in the 2x5 grid on each side of the vehicle. Remove any loose mastic material that may have broken loose. Replace the flooring back to its original position. *Note that this change may allow some water to enter the vehicle floorpan sheetmetal during deep water fording or during heavy rains.*



If you have any questions, please contact the Ford Truck Body Builders Advisory Service as shown in the header of this bulletin.